

Squares On Point



Note: Each square on the graph paper represents on $2\frac{1}{2}$ " square or a 5" square depending on whether you are making placemats or a quilt.

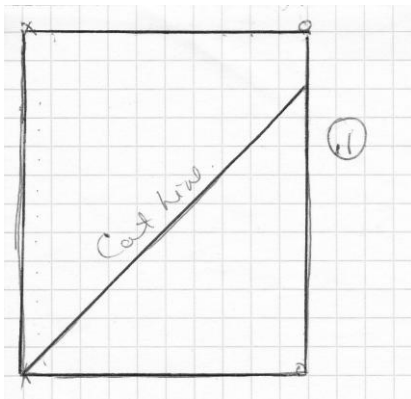
Make a rectangle:

For Placemats - using $2\frac{1}{2}$ " square

10 across x 14 down

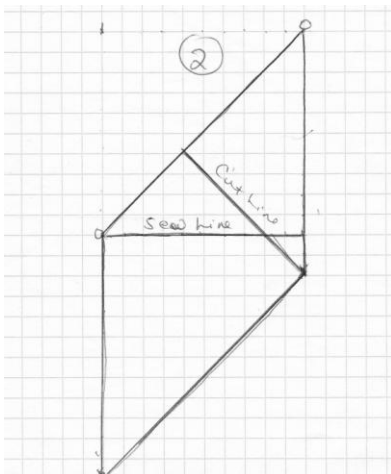
For Quilt - using 5" squares

10 across and 12 down

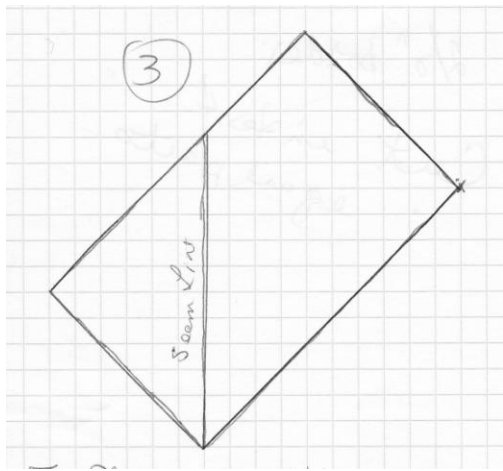


Make a diagonal cut as shown above

Attach bottom cut to top along 10 square edge as show below indicated as sew line



Make a second cut from corner to top of fourth square above seam as shown by cut line



Join the two pieces as shown

For placemats

Cut into 4 equal parts

Add a 2 1/2" border

Bind