

Arnprior & District Quilters Guild
BLOCK OF THE MONTH February 2015

This month we will be making two blocks each in the same colour way.

Materials Required

White Fabric

Any colour way (Blue, Red, Green, etc)

Cutting Instructions for Block One

29 - $2\frac{1}{2}$ " squares in one colour way

2 - $1\frac{1}{2}$ " x $6\frac{1}{2}$ " strips white

2 - $1\frac{1}{2}$ " x $8\frac{1}{2}$ " strips white

Cutting Instructions for Block Two

9 - $2\frac{1}{2}$ " squares in same colour way as Block One

1 - $4\frac{1}{2}$ " square white

2 - $2\frac{1}{2}$ " x $8\frac{1}{2}$ " strips white

2 - $2\frac{1}{2}$ " x $12\frac{1}{2}$ " strips white

Block One Assembly

Make a 9 patch for center of block from your chosen colour way.

Sew $1\frac{1}{2}$ " x $6\frac{1}{2}$ " white strips to top and bottom of nine patch block.

Sew $1\frac{1}{2}$ " x $8\frac{1}{2}$ " white strips to sides of nine patch block. Block should measure $8\frac{1}{2}$ " square.

Sew together 4 - $2\frac{1}{2}$ " squares in chosen colour way twice and then sew these to top and bottom of $8\frac{1}{2}$ " square.

Sew together 6 - $2\frac{1}{2}$ " squares in chosen colour way twice and then sew these to the sides of block. Block One should measure $12\frac{1}{2}$ " square.

Block Two Assembly

Sew 2 - $2\frac{1}{2}$ " squares together in colour way - twice and sew to the top and bottom of white $4\frac{1}{2}$ " square.

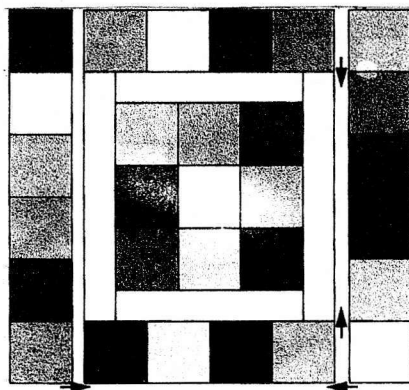
Sew 4 - $2\frac{1}{2}$ " squares together in colour way - twice and sew to the sides of white $4\frac{1}{2}$ " square.

Block should measure $8\frac{1}{2}$ " square.

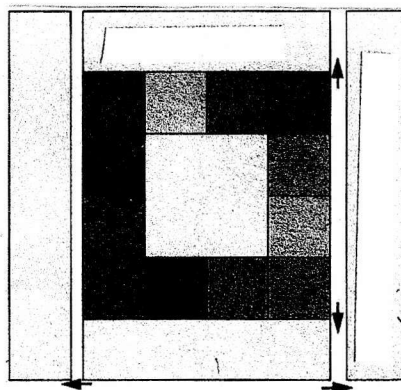
Sew $2\frac{1}{2}$ " x $8\frac{1}{2}$ " white strips to top and bottom of block.

Sew $2\frac{1}{2}$ " x $12\frac{1}{2}$ " white strips to sides of block. Block Two should measure $12\frac{1}{2}$ " sq.

Block One



Block Two



Pattern called Flower Bed. Taken from magazine "QUILT With Scraps" Spring 2014. This is how the quilt looks assembled.

